

WOOD

prints



published bimonthly by Beaver Creek Reserve volume 35 | number 5 | SEPT/OCT 2018



CSC Update 2
 New AIS Outreach 2
 Fall Programs 4
 Chippewa River: Something to Celebrate 6
 Photo Contest Winners 7
 Volunteer Spotlight 10
 Club News 11

NATURE CENTER HOURS

Monday–Saturday
 9 a.m. – 4 p.m.
 Sunday
 Noon – 4 p.m.

CONTACT

Phone & Fax
 715-877-2212
 Email
bcr@beavercreekreserve.org
 Website
www.beavercreekreserve.org

WHERE WILL YOU BEE IN FALL?

The bee is a popular indication of summer, but what happens to these significant pollinators when temperatures drop and flowers become scarce? Like most animals in fall, bees prepare for the approaching colder conditions. Different bee species prepare in various ways.

The honey bee, a non-native species to North America, knows to begin winter preparation because of the shortened day lengths. The worker bees (females) spend their fall collecting carbohydrates (nectar) and protein (pollen) to store in the hive as a food source during winter.

If this store runs out, the colony will starve. Beekeepers assist their bees by providing them with sugar mixes as an added food source.

Since drones (male bees that assist only with mating) are no longer needed in the colony, they are essentially kicked out of the hive and left to fend for themselves. Getting rid of the large-bodied drones results in more food for everyone else in the hive. The remaining worker bees have a fat producing gene that worker bees in the summer don't have - allowing for weight gain and heat retention for winter.

These worker bees also live longer (about six months) to help the colony overwinter when brood is not being produced.

The honey bees stay in the hive as temperatures continue to drop. On the occasional warm fall day, the bees will leave to dispose of waste as an attempt to keep the hive clean.

Although bumblebees spend their time in colonies in the warmer months, once fall begins, the colony produces multiple queens that mate and leave. The colony dies off and the queens find small holes just big enough for the individual to stay in over

winter until spring when she will lay her eggs and continue the cycle. Overwinter, the queen's metabolism and activity slow to conserve fuel.

Solitary bees are non-aggressive bees that don't live in colonies. Each female makes her own nest in holes, tunnels, or hollow plant stems to lay her eggs in. They leave some pollen behind and seal the nest allowing for the new bee to care for itself.



The Pollinator, by Lloyd Flieg (tricolored bumblebee (Bombus ternarius))

Continued on page 3



Citizen Science Update Pg. 2
 NEW AIS Outreach Program



2018 Photo Contest Pg. 7
 Learn more about the Karner



Directors Report Pg. 9
 More updates to BCR Grounds



Volunteer Spotlight Pg. 10
 Welcome New Volunteer Cord.



CSC Updates



We Asked, You Answered

In July we put out an ask on Facebook and via email for bird seed donations to support our bird banding program. A **HUGE** thank you to everyone who donated. We ended up with nearly **800lbs of seed and suet!** Wow, indeed!



Beaver Creek Reserve organized one of 21 groups across the state identifying invasive species on Wisconsin waterways. Photo by staff.

This year Beaver Creek helped participate in a statewide search for invasive species in the waterways in Wisconsin. 10 volunteers and a few staff members searched Lake Wissota and four different creeks surrounding it for exotic invaders like starry stonewort, new Zealand mudsnails, and so many more. This group was one of 21 locations across the state all doing the same thing on the same day, giving us a “Snapshot” view of what we can find in Wisconsin. Over 160 volunteers statewide helped out! The good news is that the group did not find any new invasives in our local waterways! Think about joining us in the streams next year.

By AJ Leidin, BCR AIS Coordinator



by Erik Huebler

BCR TO PARTICIPATE IN AIS PROGRAM AIMED AT WATER FOWL HUNTERS

The Citizen Science Center is joining a newer statewide effort to help protect waterways and waterfowl habitat of Wisconsin this fall. Waterfowl hunters are an important group able to help prevent the spread of aquatic invasive species. Seeds and snails the size of grains of sand can take a ride on decoys, boats, waders, and other hunting equipment. During this season’s waterfowl opener AIS staff and volunteers will be at popular hunting spots conducting Clean Boats Clean Waters outreach with the hunters. You may already be familiar with Clean Boats Clean Waters from summertime boating on your favorite lake. The message is

simple: **Inspect** your equipment when leaving a waterway, **Remove** all plants, animals, and mud, **Drain** all water from boats and equipment, and **Never Move** plants or live fish away from a water body. If you care about Wisconsin’s waterways or good habitat for waterfowl consider joining us as a volunteer that weekend. Volunteers will be reminding hunters about the role they can play in protecting the places they hunt in, while conducting a quick survey. Contributing even a few hours of your time that weekend will make a difference. There will be a training session for volunteers at Beaver Creek Reserve

on Thursday, September 20 from 6-8 p.m. Those interested can reach out to AJ at aj@beavercreekreserve.org or 715-877-2212 ext 118.



Wood Duck Profile by Blair Johnson

Beaver Creek PLAY DAY!

Saturday, September 29
9:00 a.m. - 4:00 p.m.

10:00 a.m. Family Yoga with Latitude 44 Yoga

Guided Nature Hikes

Kids Activities and Crafts

Snacks and Refreshments

Critter Visits

And Much more!



This event is FREE thanks to the generous support of:



FRIENDS BOARD OF DIRECTORS

Bob Prock President
Becca Bestul Vice President
Warren Gallagher Secretary
Mark Wise Treasurer

MEMBERS

Heather Deluka, Mark Wise, Troy Anderson,
Jonathan Leuthe, Bob Schmidt, Blake Tollefson,
and John Kleven

RESERVE STAFF

Director Erik Keisler
Marketing Coordinator Brianne Markin
Citizen Science Director Jeanette Kelly
AIS Coordinator AJ Leiden
Naturalists Ruth Forsgren,
..... Jim Schwiebert
Bookkeeper Connie Viken
Office Manager Hannah Becker
Office Associate Kirsten Holmes
Volunteer Coordinator Katie Lindquist
Wisconsin AmeriCorps Member
Staff Astronomer Rachel Scott
Database Coordinator Julie Felske
Caretaker Jerad Polden
Maintenance Jerry Polden

NEWSLETTER

Editor Brianne Markin

Woodprints is published bimonthly by
the Friends of Beaver Creek Reserve.

Continued from cover

In fall, Mason bees (a type of solitary bee), will form a cocoon and pupate. The adult will emerge from its cocoon to reproduce and continue the cycle in spring.

As you pull out your sweaters, close up the windows, and prepare for winter, consider adding helping bees to your fall to do list. Plant late blooming flowers (asters, goldenrod) as a food source or provide artificial nests for solitary bees to overwinter in by drilling holes in logs. Then, when you are placing that delicious apple pie in the oven this fall, you can thank the bees (who helped pollinate the apple trees) and know they too are consuming a little extra food to help them through the winter months!
by Christina Wells, Interim Naturalist



Top Left: Honeybees at Beaver Creek, Photo by Ruth Forsgren. Middle right: Perfect Pollinator by Shirley Zimmerman (bumblebee). Bottom Left Lavender Visitor by Lloyd Fleig (honeybee).



UPCOMING

programs



Phenology Hike for Elder Explorers

Two Sessions! Thurs., Sept. 6, 9:30 a.m.-11:30 a.m., or Friday, Oct. 5, 9:30 a.m. - 11:30 a.m.

Wise Nature Center

This program is targeted for our older nature lovers. This hike of an hour or so is led by a Beaver Creek Reserve naturalist and takes place on the Reserve trails. Explorers will document the changes taking place in the Reserve's woods. The walk will be capped off with coffee and a treat and further discussion about the changes and things seen on the trails. The program is geared for adults 55 and older. Hikers should expect about a mile long hike with uneven terrain and stairs to negotiate.

Registration and full payment required by September 5 or October 4 for each respective session.

Friends \$3 Nonmembers \$5

Register Today

Online:

www.beavercreekreserve.org

In Person: at the Wise Nature Center. See cover for hours.

By Mail: Please call to reserve a spot, and checks must be received by the registration deadline.

We accept cash, check, and credit or debit cards.

Cancellations require 48-hour notice prior to the program date, and are refundable, less a 10% admin fee. Tickets for special events are non-refundable.

Gentle Yoga

Mondays, September 10 - December 17, 6:00 - 7:15 p.m.

Wise Nature Center

Gentle Yoga provides all the benefits of the yoga experience at a slower and steadier pace. It helps to reduce stress, feel strong yet flexible in your body and increase positive energy. The Fall/Winter session is led by Reserve member Karen Wise and will include instruction on how to do poses, breathing techniques and relaxation practice. Please dress in loose-fitting clothing, bring a yoga mat or blanket to lie on the floor and a water bottle. Participants purchase 10 classes at a time, which they can use during the fall, winter and spring yoga class sessions. Class dates subject to cancellation based on teacher's availability. Registered participants will be notified in advance of any schedule changes.

Purchase of the 10 class pack can be done at any time during the session.

Friends \$80, Nonmembers \$100.

**At the door: Members \$10
Nonmembers \$12**

Tiffany Train Ride

**Saturday Sept 8, 7:00 a.m. - 12:00 p.m.
Tiffany Wildlife Area**

Ride the rails through the Tiffany Wetland Bottoms with the Citizen Science staff from Beaver Creek Reserve. Spend the morning on an open-air, antique train while exploring the wetlands. The round-trip ride, approximately 14 miles, will let you see what makes these wetlands so unique and important to our plant and wildlife habitat. Be sure to pack a cooler with snacks and refreshments for the day while we tour and hike the trails, 0.25 -0.5 miles each. Participants should dress for the weather and possibly wet terrain. Bring binoculars and any wanted field guides. Rain or shine, don't miss this exciting event!

Directions to the parking area is on State Hwy. 25 available online or by contacting Beaver Creek Reserve.

Registration and full payment required by September 3

Friends \$25 Nonmembers \$35

SEPTEMBER

Phenology Hike for Experienced Explorers

Thursday, September 6, 9:30 a.m.-11:30 a.m.

Gentle Yoga

Mondays, September 10 - December 17, 6:00 - 7:15 p.m.

Tiffany Train Ride

Saturday Sept 8, 7:00 a.m. - 12:00 p.m.

Bird Banding 101

Wednesday, September 12, 8:00 a.m. - 1:00 p.m. and Thursday, September 13, 7:30 a.m. - 12:00 p.m.

Northern Saw-whet Owl Banding Training

Wednesday, September 19, 5:00 - 9:00 p.m. and Thursday, September 20, 8:00 a.m. - 12:00 p.m.

A Walk in the Woods Looking for Mushrooms

Saturday, September 22, 1:00 - 5:00 p.m.

OCTOBER

Phenology Hike for Experienced Explorers

Friday, October 5, 9:30 a.m. - 11:30 a.m.

Bird Banding 101

Wed., Sept. 12, 8:00 a.m. - 1:00 p.m. and
Thur., Sept. 13, 7:30 a.m. - 12:00 p.m.
Wise Nature Center

Are you interested in joining Beaver Creek Reserve's Bird Banding Crew? Join us for an introduction to bird banding. This workshop is for those with little or no bird banding experience. Participants will learn how to safely capture and release birds. They will learn techniques to hold, band, and take measurements on birds in the hand. Discussions will also include Beaver Creek's Avian Monitoring Program, benefits of bird banding, bird identification, and banding safety.

Registration and full payment required by Sept 7.

Friends and Nonmembers \$50/person



Northern Saw-whet Owl Banding Training

Wed., Sept. 19, 5:00 - 9:00 p.m. and
Thur. Sept. 20, 8:00 a.m. - 12:00 p.m.
Citizen Science Center

A two-day workshop will be held at Beaver Creek Reserve to provide volunteers with the knowledge and training to participate in the Northern Saw-whet Owl banding program. There are various opportunities for volunteers to find the role they are most comfortable participating in. The Owl Banding program begins the last week of September and continues into early November. Banding occurs several nights a week from 7pm until approximately 1 am. The Owl Banding Crew will be looking for new volunteers to commit to a minimum of one night a week throughout the banding season.

Registration and full payment required by September 14.

Friends and Nonmembers \$50/person

A Walk in the Woods Looking for Mushrooms

Saturday, Sept. 22, 1:00 - 5:00 p.m.
Wise Nature Center

Learn to distinguish edible from poisonous mushrooms and learn how fungi affect the health of the forest. Join Tavis Lynch, a delightful amateur mycologist from Cumberland, WI. Please bring your own basket for collecting.

Registration and full payment required by September 14.

Friends \$10 Nonmembers \$15

Northern Saw-whet Owl Banding Demonstrations

Fri., October 12, 8:00 - 10:30 p.m. and
Sat., October 20, 8:00 - 10:30 p.m.
Citizen Science Center

Northern Saw-whet Owl migration is getting underway, and Beaver Creek Bird Banders will once again open the banding station to allow you to see these charismatic night flyers. Since we are working with wild animals we cannot guarantee that a bird will be caught during your visit; but you will be able to learn about the birds, their migration, and the banding process. Banding will be cancelled due to rain or extreme winds. This unique experience is something to hoot about, so invite your friends and come out to the Citizen Science Center.

Registration and full payment by October 8 and October 16 respectively.

Friends FREE

Nonmembers Adult \$3, Child \$1

Fantastic Falcons

Tuesday, October 16, 7:00 - 8:30 p.m.
Wise Nature Center

Falcons are some of the world's fastest animals. Join us for an evening program to learn more about these fascinating birds. The evening will close with a chance to meet Aurora, Beaver Creek's own educational falcon. Program is appropriate for upper elementary aged students to adults.

Registration and full payment required by October 13.

Friends FREE,

Nonmembers: Adults \$5, Children \$3

Northern Saw-whet Owl Banding
Friday, October 12, 8:00 - 10:30 p.m. and
Saturday, October 20, 8:00 - 10:30 p.m.

Fantastic Falcons
Tuesday, October 16, 7:00 - 8:30 p.m.

Adventures in Geocaching
Saturday, October 20, 9:30 a.m. - 12:00 p.m.



Northern Saw-whet Owl Banding
Saturday, October 20,
8:00 - 10:30 p.m.

Celebrate the Chippewa River Conference and Annual Meeting
Saturday, October 27, 9:00 a.m. - 5:30 p.m.

SAVE THE DATE

Holiday Crafting for Kids
Saturday, November 17, 10:00 a.m. - 12:00 p.m.



Adventures in Geocaching

Saturday, October 20, 9:30 a.m. - 12:00 p.m.

Wise Nature Center

Geocaching is a “treasure” hunting game where players search for hidden containers called caches, using GPS (global positioning system) units. This class is designed as an introduction to geocaching. Participants will learn basic GPS use and have a chance to practice their new skills during this class. Participants do not need a GPS unit. This program is geared for families with school-aged children; but, couples and adults are welcome. Pricing is per group of 2-4 people. If there are more than 4 people in your party please register for more than one spot.

Registration and full payment is due by October 15.

Friends \$10 per group
Nonmembers \$15 per group



Celebrate the Chippewa River Conference and Annual Meeting

Sat. Oct. 27, 9:00 a.m. - 5:30 p.m.
Davies Center, UWEC

Once again, Beaver Creek Reserve's Annual Meeting will take place during the 5th Annual Celebrate the Chippewa River Conference. Come hear presentations from local historians, naturalists, researchers and educators on a wide range of environmental topics, many of which will focus on the aquatic gem that meanders through our city – the Chippewa River! This year's keynote speaker is Raj Shukla, Executive Director of the River Alliance of Wisconsin. Lunch is included in the registration price.

The Friends Of Beaver Creek Reserve Annual Meeting will take place from 3:30 - 5:30 p.m. There is no charge to attend the annual meeting, but RSVP's are requested. Light snacks will be served during the annual meeting with a cash bar.

Registration and full payment requested by October 21.

\$25 for General Public,
\$22 for Friends of Beaver Creek,
\$10 for students (includes lunch)

Holiday Crafting for Kids

Saturday, November 17, 10:00 a.m. - 12:00 p.m.

Wise Nature Center

Bring the children to Beaver Creek Reserve for a morning of creative fun. Using a variety of materials including natural and /or recycled items, children will make simple ornaments and decorations for the upcoming holidays. Activities are suitable for school-age children. Pre-schoolers need an accompanying adult. (No charge for the assisting adult.) Snack included.

Registration and full payment required by November 12.

Friends Child \$6
Nonmember Child \$8



THE CHIPPEWA RIVER: SOMETHING TO CELEBRATE

The Chippewa River is a unique and beautiful resource. The Lower Chippewa River Area (LCRA) consists of the final 40 miles of the Chippewa River -- Wisconsin's second longest river -- before it meets the Mississippi. The Chippewa River has always been an important resource. As settlers came to this area, the Chippewa River was a vital resource for trade and travel. The timber industry and the mills on the river were directly responsible for the growth of Eau Claire and the surrounding towns. A lack of steep



Confluence of the Chippewa and Eau Claire Rivers c. 1880. Photo Courtesy of the Chippewa Valley Museum.

banks and a fairly even level between the ground and water level made ideal locations for boat landings. This made loading and unloading boats easy, as well as moving the thousands of logs that came down the river to holding ponds to be

sorted for milling. Those logs were then held in places like Half Moon Lake and Dells Pond once the dam was erected. It is estimated that at the peak of the saw mill industry in Eau Claire more board feet of lumber was being milled than in any other city in the country! About this same time, bridges were

being erected to unite the two banks of the river, with the first bridge located near what is now Grand Ave. This bridge connected downtown and the Water Street area, which at the time was known as “West Eau Claire.” In 1872 Eau Claire was incorporated as a city

and in 1882 a hydroelectric generator was installed at the Dells Dam, close to the site of the original logging dam.

The timber industry in the Chippewa Valley faded between 1891 and 1911 as the timber forests were all but depleted. This led to the growth of industry and agriculture in this area, both of which took their tolls on the quality of the river. One notable company located on the east bank of the Chippewa River, where Phoenix Park is today, was the Phoenix Manufacturing Company (later called the Phoenix Steel Company), which began in 1861 and manufactured

Continued on page 8

2018 Photo Contest Winners



Best in Show

Little Red, Erik Huebler

Adult

Birds

- 1st - *The One-Legged Singers*, Jeff Guettinger
- 2nd - *Hanging in There* - Norma Larabee Gabriel
- 3rd - *Where's Mom* - Bob Jankowski
- Honorable Mention - *Morning Stretch* - Erik Huebler
- Honorable Mention - *See Me...if you can*, Linda Nicastro
- Honorable Mention - *Pheasant Surprise*, Shirley Zimmerman
- Honorable Mention - *Celebration*, Erik Huebler
- Honorable Mention - *Shadow Dancer*, Ryan Zimmerman

Wildlife

- 1st Place - *Mink Run*, Erik Huebler
- 2nd Place - *Landing Gear Down*, Terry Boorman
- 3rd Place - *Siesta Time*, Hope Rutledge
- Honorable Mention - *Enthusiast*, Brian Thompson
- Honorable Mention - *Wait Your Turn*, Pat Moser
- Honorable Mention - *Bumble Bee on Oregano*, Rachel Kohn
- Honorable Mention - *Black Damselfly*, Rachel Kohn
- Honorable Mention - *Perfect Pollinator*, Shirley Zimmerman
- Honorable Mention - *Brotherly Love*, Linda Nicastro

Plants, Landscapes and Natural Objects

- 1st Place - *Close of Day* - Koan Huebler
- 2nd Place - *Little Manitou Falls*, Pat Moser
- 3rd Place - *Winter Time*, Heidi Tubbs
- Honorable Mention - *Frederickson Minnow House*, Lloyd Fleig
- Honorable Mention - *Bogged Down*, Brian Rohland

Art in Nature

- 1st Place - *Clouds of the Lake*, Brian Rohland
- 2nd Place - *Polyphemus Eyeshadow*, Erik Huebler
- 3rd Place - *Northern Lights*, Pat Moser

- Honorable Mention - *Golden Hair Surprise*, Rachel Kohn
- Honorable Mention - *The Parasols*, Koan Huebler

Beaver Creek Reserve

- 1st Place - *Curious*, Heidi Tubbs
- 2nd Place - *Buzz Feed*, Erik Huebler
- 3rd Place - *Pretty in Purple*, Norma Larabee Gabriel

People Connecting With Nature

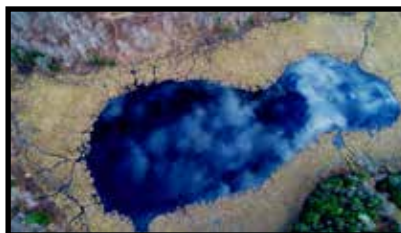
- 1st Place - *Daybreak Kayaking*, Heidi Tubbs
- 2nd Place - *Steamy Sunrise at the Lake*, Rachel Kohn
- 3rd Place - *BWCA Glass*, Bob Jankowski

Youth

- 1st Place - *Beautiful Butterfly*, Alyssa Tubbs
- 2nd Place - *Winter Wonderland*, Alyssa Tubbs
- 3rd - *Beauty at Best From Mother Nature*, Paige Bunkelman
- Honorable Mention - *Walk Like a Goose*, Addison Zimmerman
- Honorable Mention - *The Rainbow Sky*, Paige Bunkelman
- Honorable Mention - *Caution Beaver at Work*, Addison Zimmerman
- Honorable Mention - *Sunny Sunflower Patch*, Alyssa Tubbs
- Honorable Mention - *Soaring Above the Trees*, Addison Zimmerman

Phone/Tablet

- 1st Place - *Once Upon a Ribbit*, Jessica Kerckhove
- Honorable Mention - *Eastern Hognose Snake 2*, Angela Dedrickson
- Honorable Mention - *Hobbit Staircase*, Bob Jankowski



Photos (clockwise from top left) *Bogged Down* by Brian Rohland, *Once Upon a Ribbit* by Jessica Kerckhove, *The One Legged Singers* by Jeff Guettinger, *Beautiful Butterfly* by Alyssa Tubbs

Continued from page 8

equipment for the logging industry. In 1892 a new division of the company was started called the Phoenix Furniture Company which was located near Half Moon Lake. As the logging industry waned, the company was bought and sold several times, eventually converting to the manufacture of steel beams, sheet metal and other related products from 1925 until 1976.

The 1960's and 1970's saw a focus on the environment. A major catalyst for change and social support towards environmental awareness and grassroots efforts was the establishment of Earth Day, on April 22, 1970, by Wisconsin Governor Gaylord Nelson. Between the 1970's and 1990's several state and federal environmental laws were passed. The state Endangered Species Act in 1971 followed by the Federal Act in 1977, the Water Pollution Control Act was passed by Congress in 1972 and in 1974 Congress passed the Safe Drinking Water Act. These state and federal laws set the stage for sweeping changes to industry practices along the river. While these state and federal laws gave structure to policies, there were still many grassroots efforts that helped protect and conserve the LRCA. In the

1970's a nuclear power plant was proposed at a site along the lower Chippewa River. Because of public outcry this plan was eventually abandoned. Last year 1,000 acres of the property -- now known as the Tyrone Property -- was purchased by the Wisconsin Department of Natural Resources from Xcel Energy. This area which provides trail and river access for recreation and is also home to unique bird and insect species. In the late 1980's the Chippewa River State Trail was created and continued plans were made to



View of the Chippewa River from Phoenix Park. Photo by Emily Lind

improve the health of the river.

So why is the Lower Chippewa River so vital? In addition to its use for trade, travel and recreation, the Lower Chippewa River Area(LCRA) remains one of the most diverse in the state. In the peak of bird migration, it is estimated that 100,000 land birds travel through the Chippewa River flyway each day!

The Lower Chippewa River State Natural Area contains 25% of the state's remaining prairies and savannas. According to the WI DNR 75% of Wisconsin's fish species are found in the Lower Chippewa River Area and is also home to 125 different species of birds. 125 species of plants and animals that inhabit the LCRA are identified as either rare, of concern or endangered.

While the Chippewa River has come a long way, it is still far from perfect. As the Chippewa Valley grows, more people using the river pose a great threat of introducing harmful invasive species. There are dozens of organizations working to protect and conserve this incredible resource. To learn more about the history and how you can help protect the Chippewa River, attend the 5th Annual Celebrate the Chippewa River Conference, October 27th. More information is available at beavercreekreserve.org. To learn more about the history of the Chippewa River, check out Biking Into History: A Natural History Tour of Eau Claire on Thursday, October 11 from 4:30 - 6:30 p.m. leaving from the Phoenix Park trailhead. Contact the Chippewa Valley Museum for more information at either 715-834-7871 or cvmuseum.com

Brianne Markin, Marketing and Development Coordinator

Butterfly Fest 2018!



Nearly 350 visitors turned out for the annual Butterfly Fest, held August 5th. All photos by Ruth Forsgren

Director's Report



Beaver Creek is a fun place to be any day of the year, but the summer is when this pulse of Beaver Creek beats the fastest! I have personally had a great summer working alongside some great volunteers during Sprouts, the section of Nature Nuts camp that I led. Singing songs and investigating flowers and insects with youth everyday was very rewarding. It is definitely a change from the normal emails and meetings. A director needs to “connect” nature to the people every so often too!

I also spent one morning paddling down the Eau Claire River in a kayak on one of

our day camps. I love paddling that stretch of water; if you haven't paddled it in a while please try to get out there because it is beautiful. The weather was great and the river was just high enough to navigate the deep water channels. If we had used the older canoes, we would have been dragging the whole way. The new kayaks displace the weight and make the experience more enjoyable for all of the participants.

What made this particular trip extra special is that it included transportation from the Eau Claire school district and was *free* to any Eau Claire area school youth who was able to sign up. This means that youth who have two parents working or wouldn't have been able to afford the camp now had the opportunity. Beaver Creek negotiated the summer school contract with the Eau Claire Area School district this winter. Getting to see the summer students enjoy the trip made the experience all the more rewarding to me!

I am writing this report, fresh off the heels of our Annual Butterfly Fest, which was held on Sunday, August 5. I had such a great time seeing families come out for the first time and other families who say that they never miss it. We had great attendance and I enjoyed all of the comments that I heard from everyone who participated.

Our Facebook page the day after the event shared pictures of kids and adults with face



Kayaking & Geocaching was a new camp offered this year through our partnership with the ECASD.

paint and in deep concentration on the information they were learning; including my son Louie and myself. I went on to read some of the comments from that day which you can find at the left hand side of the page.

All of these great connections were made possible with hard work from the staff and volunteers and the funds that we have earned and received from donations. This brings me to the other end of my responsibilities as a director which is ensuring that we can continue to create “connections” for generations to come. Our Endowment campaign starts in September and because of that fund and the hundreds of donations given each year we have been able to invest into programs and infrastructure here at Beaver Creek and will be able to in the future. Please look for this year's letter and know that your investment in our Endowment is an investment in connecting people with nature. I feel extremely fortunate to have experienced and shared our mission this summer and saw firsthand how we are achieving it at Beaver Creek!

Erik Keisler, Executive Director



Sprouts campers play a recycling relay game outside the Wise Nature Center. .

VOLUNTEER SPOTLIGHT



This summer was a great summer to volunteer at Beaver Creek Reserve. Together with about 50 volunteers (Church of Christ and from the Eau Claire Community) we planted saplings in front of Beaver Creek Reserve and interspersed in our Sugar Bush. In the end we planted almost 250 Saplings.

The Good News camp, which was held at Beaver Creek, also volunteered time picking up trash and rocks, lopping trails, washing windows and putting barriers on saplings.

The Butterfly House and Lab were busy this summer! Through August 22 we welcomed over 3500 visitors to the Butterfly House. We are so grateful to the dozens of volunteers who gave over **500 hours** between the house, lab and rounding up milkweed for the hungry caterpillars.

In June and July we had an extremely successful Summer Camp Volunteer turnout. In the end we had over 37 volunteers



Good News Camp picking up rocks



Jim Murphy and Denny Shea were two of the volunteers who helped build the new Bird Banding Platform.

who assisted in some way with camps. Nearly a dozen volunteers assisted Jerry and Jerad in building a new bird banding platform, thanks to funds from Xcel Energy of Eau Claire. Many thanks to Greg Hirsh, Dan Mittag, Jim & Judy Schwartzmeier, Denny McQuillan, Denny Shea, Mathew Miller, Dave Saffert, Jim Murphy and others for all their help with the platform!



Welcome Katie!

Maryl (Fennie) Napariela completed her time with us as Volunteer Coordinator through the Marshfield Clinic Health Systems AmeriCorp program. We wish she and her new husband Paul all the best in their new endeavors!

We are excited to welcome Katie Lindquist to the position of Volunteer Coordinator, also through Marshfield Clinic AmeriCorp

"I was born and raised in Eau Claire. My favorite color is blue and favorite animal is a tiger. Find me cuddled up with a good book (aka Harry Potter). I Graduated from Winona State and for the past year has worked as an Sales/Event Coordinator at The Marq by Festival in De Pere, WI."

Join us in wecloming Kaite who starts mid September!



Left to right: AJ Leiden, former Voluneer Coordinator and current AIS Coorinator, NEW Volunteer Coordinator Katie Linquist, outgoing Volunteer Coordinator Maryl (Fennie) Napariela.

MONTHLY CLUB MEETINGS

Quilting Club

2nd & 4th Mondays, 1:00 - 4:00 p.m.

The Quilting Club meets the second and fourth Monday of each month to work on individual projects and to share ideas on quilting. Beginners to seasoned quilters are always welcome.

Beaver Creek Bird Club

Second Tuesday, 7:00 p.m.

Bird Club meets at BCR on the second Tuesday of each month at 7:00 p.m from September to May. The club is open to all bird lovers.

Store Sales

Save 15% off these great items

SEPTEMBER

- ALL Books!

OCTOBER

- Wind Chimes
- Rocks
- Gardening Books

Chippewa Valley Watercolor Artists

First Wednesday, 9 a.m.-12:00 p.m.

All watercolorists welcome

The Chippewa Valley Watercolor Artists meet the first Wednesday of each month to paint, critique, and share information related to watercolor painting. All watercolor artists, beginning to advanced, are invited to participate. For information, contact Jan at 715-874-5870 or at kippenj@wwt.net

Beaver Creek Photo Club

Third Thursday, 7:00 p.m.

Everyone welcome! The Beaver Creek Photo Club meets the third Thursday of the month from January through May and September through November. No December Meeting. Questions can be directed to: bcrpc@outlook.com

Chippewa Valley Astronomical Society

First Tuesday, 7:30 p.m.

Everyone welcome

The Chippewa Valley Astronomical Society (CVAS) meets on the first Tuesday of the month at 7:30 p.m. Most meetings are at Hobbs Observatory, but are occasionally held off-site. The CVAS is open to anyone with an interest in astronomy. For more information, please contact the Reserve or check out the Club's web site at www.cvastro.org.

HOBBS OBSERVATORY

Come learn fascinating facts about the night sky from members of the Chippewa Valley Astronomical Society (CVAS) as they host public programs on the third Saturday of each month at 8 pm in the Hobbs Observatory. There will be a 45-60 minute presentation on astronomical related topics by CVAS members.

Go to www.cvastro.org for a list of upcoming topics. If skies are clear and temperatures permit, the domes will be open for public observing following the program.

Public viewing is also available on CLEAR Saturdays from May through October starting about an hour after sunset (as CVAS volunteer staffing permits).

For more information on these programs, please contact BCR at (715) 877-2212 or visit www.cvastro.org or www.beavercreekreserve.org

How Sweet It Is!



Honey is back!

\$4 for 4 oz - \$6 for 6 oz.

FALL VOLUNTEER OPORTUNITIES

BEAVER CREEK PLAY DAY

Saturday, September 29, 9:00 a.m. - 4:00 p.m.

Volunteers are needed for a variety of shift times and duties. We are looking for hiking guides, snack servers, craft project leaders and more! Please contact Brianne at brianne@beavercreekreserve.org or Jeannette at csc@beavercreekreserve.org for more information.

TRAIL MAINTENANCE

Ongoing

Volunteers are always needed to help trim trails, prep flower beds, replace trails signs and more. Contact volunteer@beavercreekreserve.org



HOLIDAY CRAFTING FOR KIDS

Saturday, November 17, 10:00 a.m. - 12:00 p.m.

We will need helpers in the weeks leading up to program to help prepare the craft supplies and projects. Helpers are needed day of to lead crafts and serve snacks. Email volunteer@beavercreekreserve.org for more information.



SI County Road K | Fall Creek, WI 54742
beavercreekreserve.org
CONNECTING PEOPLE WITH NATURE

Return Service Requested

Non-Profit Org
US Postage
PAID
Permit No. 1557
Eau Claire, WI 54701



Raj Shukla, Executive Director
River Alliance of Wisconsin

Saturday, October 27
Davies Center, UWEC

Conference
9:00 a.m. - 3:30 p.m.

Friends of BCR Annual Meeting
3:30 - 5:30 p.m.

See details on page 6, invitation to follow. Visit beavercreekreserve.org/events for more information.