

WOOD prints

published by Beaver Creek Reserve

volume 36 | number 4 | FALL 2019



CSC Update 2
 Fall Programs 4
 2019 Photo Contest Winners... 6
 Butterfly Fest in Photos 7
 Volunteer Update..... 8
 Current Happenings 9

NEW!
 Hours Extended Tuesdays
 March 12 - October 29

NATURE CENTER HOURS

Monday, Wednesday - Saturday
 9 a.m. - 4 p.m.
 Tuesdays (Starting Mar. 12)
 9 a.m. - 8:00 p.m.
 Sunday
 Noon - 4 p.m.

CONTACT

Phone & Fax
 715-877-2212
 Email
bcr@beavercreekreserve.org
 Website
www.beavercreekreserve.org

BEAVER CREEK INVESTS IN ITS FUTURE

I am excited to announce that on August 1, Beaver Creek Reserve became the owner of the residence at 390 S. 130 Ave., Fall Creek, WI. Located between Beaver Creek and the former Sherwood Inn, the parcel includes 5.3-acres, a well-kept 20-year-old 2400 sq./ft. home, and a 30x60ft heated shop.

If you've read my past Director's Reports, you know that our board has been spending a great deal of time working on strategic plans and campus planning. Throughout the planning process the focus has been, and will remain, on ensuring that all decisions align with our mission. While not part of our initial plan, the newest acquisition new home offers solutions to many of the campus needs that were identified in the campus plan created by Ayres and Associates in the Fall of 2017.

Despite the parking lot expansion in 2017, we continue to be short on dedicated parking spaces during peak hours and special events. When all of the spaces on north campus and at the nature center are full visitors choose to park along Hwy K, creating a major safety concern.

The campus plan called for expanding the parking lot in front of the Citizen Science Center, which was designated a high-priority project by our board. The cost to expand the parking lot on north campus was approximately \$377,000. Not only would half of the parking lot been gravel, but it would have required more trees to be cut down. During French Toast Breakfast and Butterfly Fest we were able to use the Sherwood Inn for staff and volunteer parking which alleviated much of the congestion. This year Butterfly Fest had nearly 700 visitors in under three hours, and by using the field in front of Hobbs Observatory and Sherwood Inn there was parking for everyone. Moving forward, special events could use the new house's proximity to the CSC and allow staff and volunteers to park nearby while freeing up space for visitors.

Beaver Creek's Board had also approved a design plan to expand the Wildlands School by adding a *new* building with a basement to the CSC. A basement in the new building would allow us to meet the square-footage demands,



This charming house is Beaver Creek's newest acquisition.

Continued on page 3



Citizen Science Update Pg. 2
 Fall Birding Opportunities



Fall Programs Pg. 4
 Eagle Center Visit Announced!



Photo Contest Results Pg. 7
 2019 Photo Contest Winners



Volunteer Update Pg. 6

Citizen Science Center Update

Fall offers many opportunities for birding at BCR

We at Beaver Creek Reserve love nature. Many of us, staff, volunteers, members, and visitors really love birds. Whether its looking for birds, listening for birds, learning about birds, photographing birds, or painting birds, we spend a lot of time thinking about birds. In fact, one of the main focuses of the Citizen Science Center is birds.



Beaver Creek Reserve began banding birds in 1987. Currently our banding projects include Weekly Feeder Bird Banding, American Kestrel Nest Box Monitoring, MAPS – Monitoring Avian Productivity and Survivorship, and Northern Saw-whet Owl Migration. Over the past 22 years we have banded over 60,000 birds between our four banding projects. Of those 60,000 birds there have been over 125 different species of birds banded. Some of those species include Pileated Woodpecker, Scarlet Tanager, Hooded Warbler, House Wren, Northern Waterthrush, Belted Kingfisher, Fox Sparrow, Great Crested Flycatcher, Red-eyed Vireo, and of course the Black-capped Chickadee. What is the most common bird we band? The American Goldfinch, we have banded over 17,000 of them. What is the oldest bird we have banded? A White-throated Sparrow. That little sparrow was 11 years old. What

is the largest bird we have captured? A Barred Owl with a wingspan of four feet. The furthest away one of the birds we banded has flown? Nicaragua, over 3,000 miles.

Has your interest been peeked? Do you like birds? Would you like to learn more about birds? Then, come and join our bird banding crew. This fall we will be offering two bander training programs. Training to take part in our fall Northern Saw-whet Owl migration project will be held on September 11 and 12. Training to help with our songbird banding projects will be held on November 6 and 7. Not previous knowledge or experience is necessary to join our banding program. All that we ask if you would like to be involved is that you have an interest in birds. See our program listings on page four, for more information.

Jeanette Kelly CSC & Education Director

Busy Summer for the CSC



Summer is a busy season for the CSC staff and interns, between Clean Boats, Clean Waters and other aquatic invasive species monitoring, removal and education. Here are a few photos from some of their summer programs and projects.

Top Left: Purple loofestribe control day

Bottom Left: The Lower Chippewa River Invasives Partnership toured Putnam Park and the UWEC campus to identify terrestrial and aquatic invasive species.

Bottom center: CSC and volunteers at a bio control on Island Lake.

Bottoms right: AJ Leiden teaches the 2019 Girls in Nature Camp about aquatic invasives.



while reducing the overall footprint of the building, as well as adding a storm shelter for safety. The campus plan called for the new school building to be attached to the CSC. Unfortunately, the cost to build a new building was extremely high. When approached, several donors were quick to point out that while they would be donating to Beaver Creek Reserve, if the building was attached to the CSC, ultimately it would belong to Eau Claire County. This would also mean that negotiating the rental fees and usage of the new building would take place between BCR, EC County, and Wildlands.

In order to grow Beaver Creek Reserve, the board decided that the new parcel of land would be the best location for the expanded school buildings, as it would be fully owned by The Friends of Beaver Creek, Inc., meaning dollars invested in the partnership with the Wildlands School and Beaver Creek will stay with the two entities.

These 5+ acres also offer additional building sites with less impact on the current forests. We would be able to reduce future building costs by not having to build a basement, as the house has a spacious basement that can double as a storm shelter, and the garage can be used as a technology/shop makers space. We will be updating the campus plan, and the building plans, which we expect to be more cost effective since we no longer need to include a basement in a new building. More details will be released when they are ready and approved by the board.

One of the benefits of adding a new building to house Wildlands School was to allow all students to be housed in one building. Currently, students are spread out between the CSC and Hobbs Observatory, meaning Wildlands and Beaver Creek Reserve staff need to manage two groups and avoid scheduling conflicts with Chippewa Valley Astronomical Society who run much of the public programming at Hobbs. Until a new building for Wildlands is built, we will be moving the CSC staff into the new house with the long-term goal of eventually converting the named building back to its original purpose.

While it has been somewhat

frustrating for the staff and students to share a building, we have to remember that this is due to the incredible success and growth of both the CSC and the Wildlands Charter School. Seven years



The large garage will make a great show and maker space for the Wildland's Students. Photo by Ty Randerson

ago, when the school moved into the CSC, it was a practical and financially prudent decision. Now, creating separate spaces will allow them the space they need, as well as accommodate future growth.

Another great benefit of the home acquisition is the opportunities it gives to BCR to offer housing for interns. For universities like UWEC, UW- Stevens Point, and UM- Duluth, as well as other universities across the country, offering housing onsite gives us a competitive advantage and attracts from a larger talent pool. These same interns could help with additional programming, another goal of our strategic plan.

After recently utilizing the Sherwood Inn for parking, we've realized how convenient of a location it is for BCR to use. With this in mind, we approached the landowners and asked them to notify us first should they ever decide to sell. In what can only be called, "Be careful what you wish for," they made us an offer and we closed on the house in 60 days! Both the Endowment and Friends' Board spent a considerable amount of time weighing the potential positives and negatives, it was unanimously decided to invest in the property. As you can see, we have some lofty goals for the property, all of which are well tied to our mission. The best part of this particular investment is that it's a relatively low-risk. Should we decide that the property doesn't meet our goals, we can always sell it. We are truly ecstatic about this win/win opportunity and all the great possibilities it affords Beaver Creek, now and in the future.

FRIENDS BOARD OF DIRECTORS

John Kleven..... President
 Blake Tollefson Vice President
 Warren Gallagher..... Secretary
 Mark Wise..... Treasurer

MEMBERS

Heather Deluka, Troy Anderson, Jonathan Leuthe, Donald Mowry, Jamie Kane, Christopher Gierhart, and Kathy Clark

RESERVE STAFF

Director Erik Keisler
 Marketing Coordinator Brianne Markin
 Director of Education Jeanette Kelly
 AIS Coordinator AJ Leiden
 Naturalist Animal Specialist Ruth Forsgren
 Naturalist Educator Megan Giefer,
 Naturalist Land Manager Jim Schwiebert
 Bookkeeper Connie Viken
 Office Manager Hannah Becker
 Office Associate Kirsten Holmes
 Volunteer Coordinator Kristen Giefer
 Wisconsin AmeriCorps Member
 Staff Astronomer Open
 Database Coordinator Julie Felske
 Caretaker Jerad Polden
 Maintenance Jerry Polden

NEWSLETTER

Editor Brianne Markin

Woodprints is published quarterly by the Friends of Beaver Creek Reserve.

I also want to give a heartfelt thank you to everyone who has worked hard and donated through the years to help make all our growth possible!

Erik Keisler, Executive Director

OPEN HOUSE

**Tuesday, October 1
 4-8:00 p.m.**

**Free Open House for
 all members!**

**Stop by for a quick tour, light snacks
 and then enjoy the Nature Center, trails
 and more!**

RSVP's to Julie Felske 715-877-2212

UPCOMING

programs



SEPTEMBER

Phenology Hike for Experienced Explorers

TWO SESSIONS:

Tuesday, Sept. 3, 9:30 - 11:30 a.m.,

Tuesday, October 1, 9:30 - 11:30 a.m.

Wise Nature Center

This program is targeted for our older nature lovers. This hike of an hour or so is led by a Beaver Creek Reserve naturalist and takes place on the Reserve trails. The program is geared towards adults 55 and older. Hikers should expect about a mile long hike with uneven terrain and stairs to negotiate.

Friends \$3 Nonmembers \$5



Register Today

Online:

www.beavercreekreserve.org

In Person: at the Wise Nature Center. See cover for hours.

By Mail: Please call to reserve a spot, and checks must be received by the registration deadline.

We accept cash, check, and credit or debit cards.

Cancellations require 48-hour notice prior to the program date, and are refundable, less a 10% admin fee. Tickets for special events are non-refundable.

Tiffany Train Ride

Saturday, Sept 7, 7:00 a.m. - 12:00 p.m.

Tiffany Wildlife Area

Ride the rails through the Tiffany Wetland Bottoms with the Citizen Science staff from Beaver Creek Reserve. Spend the morning on an open-air, antique train while exploring the wetlands. The round-trip ride, approximately 14 miles, will let you see what makes these wetlands so unique and important to our plant and wildlife habitat

Registration and full payment required by September 3.

Friends \$25 Nonmembers \$35

Gentle Yoga

Mondays, September 9 - November 11, 6:15 p.m. - 7:30 p.m.

Wise Nature Center

Gentle Yoga provides all the benefits of the yoga experience at a slower and steadier pace. It helps to reduce stress, feel strong yet flexible in your body and increase positive energy. Led by Reserve member Karen Wise, Gentle Yoga will include instruction on how to do poses, breathing techniques and relaxation practice. Please dress in loose-fitting clothing, bring a yoga mat or blanket to lie on the floor and a water bottle. Purchase the 10 class pack PRIOR to the start of the Fall session and save.

Friends \$80, Nonmembers \$100.

**At the door: \$10 Members
\$12 Nonmembers**



Northern Saw-whet Owl Banding Training

Wed., Sept. 11, 5:00 - 9:00 p.m. and

Thur., Sept. 12, 8:00 a.m. - 12:00 p.m.

Citizen Science Center

A two-day workshop will be held at Beaver Creek Reserve to provide volunteers with the knowledge and training to participate in the Northern Saw-whet Owl banding program. The Owl Banding program begins the last week of September and continues into early November. Banding occurs several nights a week from 7pm until approximately 1 am. The Owl Banding Crew will be looking for new volunteers to commit to a minimum of one night a week throughout the banding season. Please bring a brown bag dinner for Wednesday night.

Friends and Nonmembers \$55

DIY Immune Tonic

Wed., September 18, 6:00 - 8:00 p.m.

Wise Nature Center

Join us as we learn about tasty herbs traditionally used to support the immune system to keep you healthy all season long and to help you get better faster when you unfortunately do get sick. We will discuss herbs such as elderberry, Echinacea and more and even get to process fresh Echinacea root from Master Herbalist Kerri Kiernan's garden! Make your own tonic to bring home. All materials included with workshop fee.

Friends \$25 Nonmembers \$30



More program details available online.

Tree ID and Nature Prints

Sat., Sept. 21, 9:30 am - 12:00 p.m.

Wise Nature Center

Join us for a walk in the forest as we learn the basics of tree identification and cyanotype print making. Learn more about the history of the cyanotype from Volunteer Naturalists Rachel Urban and Andy Wians while you create your own prints to take home with you. All print materials will be provided.

Friends \$15, Nonmembers \$17

OCTOBER

Sweater Weather Tea Blending

Wednesday, October 9, 6:00 - 8:00 p.m.

Wise Nature Center

It's time to cozy up with a mug of your very own home-crafted tea blend featuring the ethically wild-crafted and home-grown herbs of local Master Herbalist, Kerri Kiernan. In this session we will learn how to make a balanced and tasty tea blend as well as the added benefits of medicinal herbs. Participants will then make their own blend of tea to bring home. Tea will be served in class during discussion! BYO sweater :) All materials included with workshop fee.

Friends \$20 Nonmembers \$25

Northern Saw-whet Owl Banding

Fri., October 11, 8:30 - 10:30 p.m. and

Sat., October 26, 8:30 - 10:30 p.m.

Citizen Science Center

Northern Saw-whet Owl migration is getting underway, and Beaver Creek Bird banders will once again open the banding station to allow you to see these charismatic night flyers. Since we are working with wild animals we cannot guarantee that a bird will be caught during your visit; but you will be able to learn about the birds, their migration, and the banding process.

Donations appreciated, but not required.

Infused Oils and Salve Making

Wednesday, October 16, 6:00 - 8:00 p.m.

Main Lodge (North Campus)

Learn how to create healing salves with herbal oils for pain, wounds and other skin ailments using common herbs as well as local wild weeds. Join us as we learn how to concoct herbal remedies that can be used on the skin. We will use a versatile recipe for minor skin issues and for reducing pain. If you joined us in spring 2019 for Salve Making come and join in on the fun again as Master Herbalist Kerri Kiernan will cover another method of infusing oils with herbs...the quick method! Herbal oils & salves are a must-have DIY remedy to add to your home apothecary. All materials included with workshop fee.

Friends \$25 Nonmembers \$30

Adventures in Geocaching

Sat., October 26, 9:30 a.m. - 12:00 p.m.

Wise Nature Center

Geocaching is a "treasure" hunting game where players search for hidden containers called caches, using GPS units. This class is designed as an introduction to geocaching. This program is geared for families with school-aged children; but, couples and adults are welcome. Pricing is per group of 2-4 people. If there are more than 4 people in your party please register for more than one spot.

Friends \$10 per group

Nonmembers \$15 per group

National Eagle Center Ambassador Visit

Tuesday, October 29, 7:00 - 8:00 p.m.

Wise Nature Center

The National Eagle Center in Wabasha, MN will be visiting Beaver Creek Reserve with one of their Eagle Ambassadors! Come learn about eagle biology, ecology, natural history and cultural connections from one of the Eagle Center's naturalist interpreters. Hosted by the Friends of Beaver Creek Bird Club.

Friends \$5 Nonmembers \$8

NOVEMBER

Friends of Beaver Creek Reserve Annual Meeting

Saturday, November 2, 5:00 - 9:00 p.m.

Main Lodge (North Campus)

The Annual Meeting is back at Beaver Creek Reserve! We are excited to show off the upgrades we have made to the Main Lodge. See back cover for save the date. We will be sending a survey asking for your input on the format and food. Formal invite to follow for all active members.

Bird Banding 101

Wed., Nov. 6, 8:00 a.m. - 1:00 p.m. and

Thur., Nov. 7, 7:30 a.m. - 12:00 p.m.

Wise Nature Center

Are you interested in joining Beaver Creek Reserve's Bird Banding Crew? Join us for an introduction to bird banding. This workshop is for those with little or no bird banding experience. Participants will learn how to safely capture and release birds. They will learn techniques to hold, band, and take measurements on birds in the hand. Discussions will also include Beaver Creek's Avian Monitoring Program, benefits of bird banding, bird identification, and banding safety.

Friends and Nonmembers \$50 per person

Seasonal Mood Elixir Make & Take

Wednesday, Nov. 13, 6:00 - 8:00 p.m.

Wise Nature Center

As we transition from fall into winter learn about the herbs that can support the mind and body during seasonal changes. Nature offers gentle and supportive remedies to make your winter days a little brighter! In this class we will cover a variety of holistic techniques to help you cope with the winter blues as well as simple remedies we will make in class such as a tea or tincture which you will custom blend to fit your unique needs. Instructor: Master Herbalist Kerri Kiernan, River Prairie Apothecary LLC

Friends \$25 Nonmembers \$30

All programs require pre-registration.

Register today!

2019 Photo Contest Winners

Best in Show

Beaver Family Time, Scott Knight

Birds

1st Place - *Mr. R. B. Nuthatch*, Joseph Motto

2nd - *My Territory!*, Hope Rutledge

3rd - *Sunset Silhouette*, Shirley Zimmerman

Honorable Mention - *Judges Confer*, Erik Huebler

Honorable Mention - *Feeding Time*, Pat Moser

Honorable Mention - *Black-Throated Green*, Erik Huebler

Honorable Mention - *Fly By*, Pat Moser

Wildlife

1st Place - *Evening Rounds*, Noah Roseen

2nd Place - *Pop Up Pup*, Ryan Zimmerman

3rd Place - *Otter Snow Angel*, Ryan Zimmerman

Honorable Mention - *Wood Snail*, Rachel Kohn



Best in Show 2019 - *Beaver Family Time*, by Scott Knight

Plants, Landscapes and Natural Objects

1st Place - *Magic Morning*, Erik Huebler

2nd Place - *Autumn Serenity*, Heidi Tubbs

3rd Place - *Tamaracks In Fall* - Rachel Kohn

Honorable Mention - *Painted Clouds* - Noah Roseen

Honorable Mention - *Painted Pathway* - Brian Rohland

Art in Nature

1st Place - *Leaves On Lake Superior* - Pat Moser

2nd Place - *Petoskey* - Erik Huebler

3rd Place - *Morning Has Broken* - Rachel Kohn

Honorable Mention - *Morning's Reflection* - Rachel Kohn



1st Place Art in Nature - *Leaves on Lake Superior*, by Pat Moser

People Connecting With Nature

1st Place - *Wading* - Heidi Tubbs

2nd Place - *Patiently Waiting* - Rachel Kohn

3rd Place - *Swimmin' With The Fishes* - Erik Huebler

Beaver Creek Reserve

1st Place - *Brook Trout* - Erik Huebler

2nd Place - *Welcome Beautiful* - Julie Hathaway

3rd Place - *Butterfly House Thanks* - Heidi Tubbs

Youth

1st - *Elsa's Wrath* - Koan Huebler

2nd - *Butterfly's Best Friend* - Alyssa Tubbs

3rd - *Turtle On The Trail* - Grace Edenborg

Honorable Mention - *Curious Caterpillar* - Alyssa Tubbs

Honorable Mention - *The Eyes Have It* - Koan Huebler

Honorable Mention - *Beautiful Black River* - Hannah Tubbs

Honorable Mention - *Perry Creek Retreat* - Hannah Tubbs



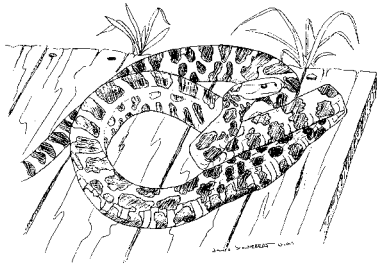
1st Place Youth Division - *Elsa's Wrath* by Koan Huebler

Snakes of Wisconsin

Thursday, November 14, 7:00 - 8:00 p.m.
Wise Nature Center

Ever wonder what is ssslithering in your backyard? Come join a naturalist as we learn interesting facts about one of Wisconsin's most misunderstood creatures and discover why snakes are so important to our state! You will even have a chance to meet a live snake that lives here at Beaver Creek. This program is appropriate for all ages.

Friends: FREE Nonmembers \$7



Fox Snake by Jim Schwiebert



Holiday Crafting for Kids

Saturday, November 23, 10:00 a.m. - 12:00 p.m.

Wise Nature Center

Bring the children to the Reserve for a morning of creative fun. Using a variety of materials including natural and /or recycled items, children will make simple ornaments and decorations for the upcoming holidays. Activities are suitable for school-age children. Pre-schoolers need an accompanying adult. (No charge for the assisting adult.) Snack included.

Friends \$6 Nonmember \$8

WINTER SAVE THE DATES

Make Your Own Snowshoes

Saturday and Sunday, December 7 and 8, or January 4 and 5, 9:30 a.m. - 3:30 p.m. each day

Introduction to Snowshoeing

Saturday, January 11, 9:30 - 11:30 a.m.

Frosty Frolic

Sat., January 18, 10:00 a.m. - 3:00 p.m.

Tree and Shrub ID in Winter

Sat., January 25, 9:30 a.m. - 12:00 p.m.

Timber Wolf Winter Ecology Workshop

Sat. Jan. 25, 9:00 a.m. - 4:00 p.m. and Sun., Jan. 26, 9:00 a.m. - 12:00 p.m.



Butterfly Fest 2019

Thank you to all our staff, volunteer and visitors for making Butterfly Fest an overwhelming success! We had nearly 700 people join us to celebrate! Save the date of August 2, 2020!

Photos by Ruth Forsgren



VOLUNTEER SPOTLIGHT



Good News Camp picked lots of spotted knapweed as a service project during their camp stay.



Above: Julie Felske (left) and Katie Lindquist (right) pose for a fun final photo!

Below: Kristen Giefer is an avid hiker and is sure to be a great fit as our new Volunteer Coordinator



What a Busy Summer! Between June 1 and August 20, Beaver Creek Reserve volunteers put in nearly 980 hours! 288 of those hours were just for summer camps and another 255 hours were for the Butterfly House and Fest. Speaking of Butterfly Fest, we had nearly 700 attendees!

Thanks to the Good News Camp for pulling up bags and bags of spotted Knapweed at the Sherwood Inn. Spotted knapweed is a terrestrial invasive that has a tendency to crowd out prairies and other areas with sandy soil. It releases chemicals into the soil which inhibit the growth of

surrounding plants and can strongly impact wildlife habitat.

Thank you also to a group from UnitedHealth Care for also helping take care of invasive plants near the tunnel between north and south campus.

August was bittersweet as we said goodbye to Katie Lindquist who served as our Volunteer Coordinator through Marshfield Clinic AmeriCorp. We wish Katie all the best in her next position, and thank her for all her great work and boundless positive energy! As they say, "when one door closes, another opens." We are excited to welcome Kristen Giefer as our next Volunteer Coordinator. If that name sounds

familiar, that's because Kristen is the sister of our new Naturalist Educator, Megan Giefer! We are thrilled to have her join us. Kristen is finishing up as a program coordinator at the YMCA Camp in Ely, MN. She is a recent South Dakota State University with a BS in Science with a focus on Ecology and Environmental Science. Kristen will be starting later in September. We can't wait for you to meet her!

FALL VOLUNTEER OPPORTUNITIES

NATURE NOOKS UPDATES

Before it snows!

We are looking for a handful of volunteers to help us paint, weed and spruce up our Nature Nooks prior to winter. We have the supplies and just need 2-3 hours of help. Please contact Megan at 715-877-2212 or megan@beavercreekreserve.org

HOLIDAY CRAFTING FOR KIDS

Saturday, November 23, 10:00 a.m. - 12:00 p.m.




We are in need of volunteers to help prep crafts prior to the event, as well as assist with making crafts, refilling snacks and reading stories. Contact Ruth at 715-877-2212 or ruth@beavercreekreserve.org



CURRENT HAPPENINGS

At Beaver Creek

MONTHLY CLUB MEETINGS

MONDAYS	TUESDAYS	WEDNESDAYS	THURSDAYS	SATURDAYS	
 <p>Quilt Club</p> <p>2nd & 4th Mondays of the Month 1:00 - 4:00 p.m.</p>	 <p>Chippewa Valley Astronomical Society</p> <p>1st Tuesday of the Month 7:30 p.m.</p>	 <p>Chippewa Valley Water Color Artists</p> <p>1st Wednesday of the Month 9:00 a.m. - 12:00 p.m.</p>	 <p>BCR Photo Club</p> <p>3rd Thursday of the Month 7:00 p.m. Jan - May and Sept. - Nov.</p>	 <p>Hobbs Observatory Public Viewing</p> <p>Clear Saturday Nights May - October 1 hour after sunset</p>	 <p>Hobbs Observatory Astronomical Series</p> <p>3rd Saturday of the Month 8:00 p.m.</p>



THANK-YOU!

Thank you to E.O. Johnson of Eau Claire for donating a new-to-us copier/printer! Our older printer was not working and was not able to be repaired. Plus this newer unit is more ink and energy efficient!



THANK-YOU!

Thank you Alex, Issac, and Scott of Eau Claire Energy Cooperative! ECEC came out early to move and replace some of Beaver Creek Reserve's power lines. This was the final step in burying our power lines across campus to make Beaver Creek Reserve prettier and safer in the event of storms!

Fall Store Sales

September

All things butterfly

October

- Wind chimes
- T Shirts
- Gardening Books



New T Shirt designs are in the nature store now!



S1 County Road K | Fall Creek, WI 54742
beavercreekreserve.org
CONNECTING PEOPLE WITH NATURE

Return Service Requested

Non-Profit Org
US Postage
PAID
Permit No. 1557
Eau Claire, WI 54701



We want your feedback! Please complete a survey on your choices for the Annual Meeting by September 15. Visit <http://bit.ly/30EWMWH> to complete our survey.

The event poster features a red, black, and white plaid background. A dark teal rectangular box with a white border is centered on the page, containing the event details.

Friends of Beaver Creek Annual Meeting

Lumberjack's Ball

Saturday, November 2, 2019
Beaver Creek Reserve Main Lodge
5:00 - 9:00 PM